

Platform: Mac/PC/UNIX

Level of Difficulty: Beginner

This document will help you use Fugu, WS_FTP, and Webdrive on the associated platforms. These programs will help you move documents between your eden or rci account and the computer. Before reading this document you should be familiar with the operating system you are using.

Introduction

Fugu, WS_FTP, and WebDrive are programs used to move files between your Unix accounts and your computer's hard drive or disk and another Unix account. These programs are most commonly used to add attachments to your email or retrieve an attachment someone sent to you. Before transferring any file, you should save any work and close the program in which it was created/edited. Then follow the instructions below according to the type of computer/operating system that you are using.

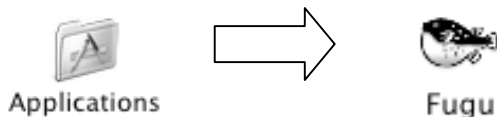
Finding the correct application

<i>Platform</i>	<i>Application</i>	<i>Page</i>
Macintosh	Fugu	1 - 3
PC	WebDrive	3 & 4
PC	WS_FTP	4 & 5
X-Term	Ftp	5 & 6

File transferring on a Macintosh

Opening the application

Double click on the APPLICATION icon located on the desktop. Double click on the Fugu icon in the Application folder or on the dock. This will start the program.



Making the connection

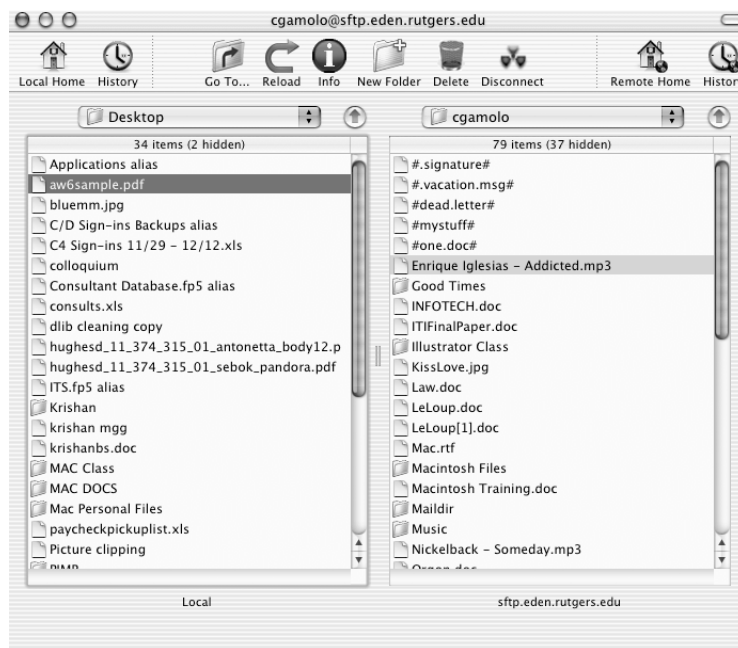
After starting the program, a window will appear. The left hand side contains a view of your Desktop and the right hand side is where you will connect to your account. Type in the full account address or domain name you wish to connect to in the section marked CONNECT TO. At Rutgers, the host is usually: sftp.eden.rutgers.edu. In the section of the window marked USERNAME, fill in your username, leave the PORT and DIRECTORY blank. Click CONNECT. Once it is connected, it will ask you to provide your password. After doing so, click on AUTHENTICATE. This should open your account on the left side of the window. All the contents of your account will appear in list view.

Moving files to your Unix account

Before transferring a file to your account, be aware of what kind of file you are transferring. Make sure the file you are transferring is closed. Find the file in the list view, highlight it and drag it into your account window. To confirm that the file was transferred, click on RELOAD, and find your file in the list view.

Moving files from your Unix account

To move files from your Unix account to your computer drive, highlight the file, drag it into the left hand window. Click RELOAD and your file should be in the list of files. If you want to specify where you would like to save your file, click on the pull down menu on the left hand side and choose the path and folder where you want the file to be in.



Quitting the program

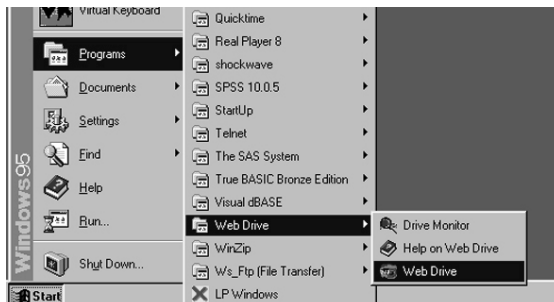
After completing the transfer, you may quit the application by going to **FUGU** pull-down menu on the Apple menu. Click on QUIT FUGU. This will close the FUGU program. ,

File Transferring on a PC

There are two programs available on the PC that you can use to transfer files, WebDrive and WS_FTP.

Opening the program: WebDrive

To start WebDrive, click on the START, point to PROGRAMS, then WEBDRIVE. Finally, click on the WEBDRIVE icon. A window will appear with the different hosts. Choose the host you want to log in to. Then a LOGIN window will appear.

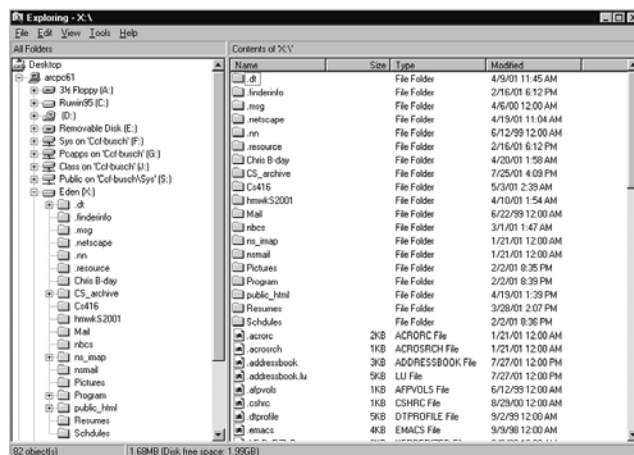


Making the connection

The URL should be set up to the host that you had selected. And the DRIVE would be set on the available drive, which is defaulted on the "X:" drive. In the USERNAME and PASSWORD fields, type your username and passwords for that account. Then click the OK button to create the connection. Two confirmation windows for your USERNAME and PASSWORD will pop up sequentially. Click the OK button as it confirms your username, and then click OK on the next window as it confirms your password.

Moving files to your Unix account

Once the confirmations are made, the Windows Explorer window will appear. Here you can manipulate your files, along with transferring files to and from your Unix account. Windows Explorer is set up with directories on the left and its content on the right. To put files into your account, right click on the files you want to add, then select **copy**. Choose the drive letter that represents your account, then right click in the area on the right side and select **paste**. This will then copy the file into your Unix account. To confirm, you can look in both your drive/account and the computers' drive or disk drive to confirm copies in both. **Remember to close all files before transferring them.**



Moving files from your Unix account

Once the confirmations are made, the Windows Explorer window will appear. Here you can manipulate your files, along with transferring files to and from your Unix account. Windows Explorer is set up with directories on the left and its content on the right. To retrieve files from your account, right click on the file in your directory/account and choose **copy**. Double click the temp folder under the "C:" directory, and then right click in the area on the right and select **paste**. This will copy the file from your account to the temp directory

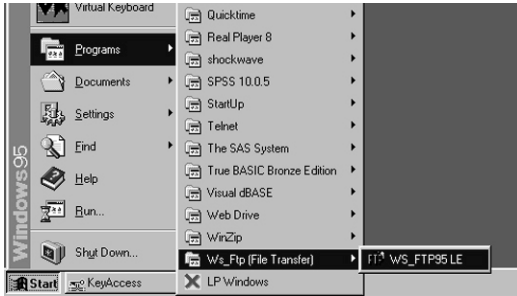
of the computer you are working on. . To confirm, you can look in both your drive/account and the computers' drive or disk drive to confirm copies in both.

Quitting the program

To quit, click on the DISCONNECT button on the WebDrive window with the host name labeled at the top. This button is located at the bottom of the window.

Opening the program: WS_FTP

To start WS_FTP, click on the START, point to PROGRAMS, then WS_FTP (file transfer). Finally, click on the WS_FTP icon. The program will start and a window labeled "Session Properties" will appear.



Making the connection

The PROFILE NAME and HOST NAME fields should display the domain name of the account you wish to copy the file to. For

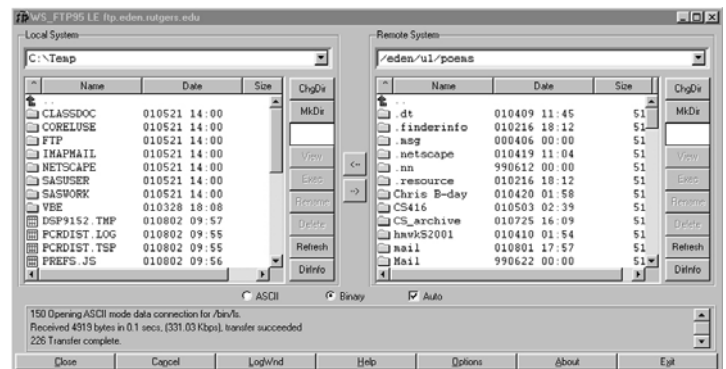
example, at Rutgers, the profile name could be eden, while the host name is eden.rutgers.edu. In the USER ID and PASSWORD fields, type your username and password for the account. Once you have filled in these fields, click the OK button to connect to your account. Be aware of the type of file you are transferring. If the file is a text file, choose the **ASCII** operator button. For other files, choose the **Binary** operator button. If you are unsure of the file type, check the **Auto** feature. This will allow the program to determine what type to transfer it as.

Moving files to your Unix account

In between the two white windows are arrows. To transfer files into your Unix account, click twice on the drive/directory in which the file to be transferred is located. This is not only the computer you are working on, but can be your personal floppy/zip disk drive. To change to a different location, you must scroll down in the left window and choose the letter to the drive. Click once to highlight the document you want to transfer. Click on the arrow (→) pointing to the right, toward your Unix account to copy the file into your account. To confirm, you can scroll through both windows to check if the file is located in both sides.

Moving files from your Unix account

In between the two white windows are arrows. To transfer files from your Unix account, click twice on the drive/directory in which the file is to be located. It could be on the "C:\Temp" of the computer you are working on or the drive of your floppy /zip disk. To find this different location, you would need to change the directory by scrolling



to the bottom of the left window, and choosing the directory in which you want to place your files. Click once to highlight the document you want to transfer. Click on the arrow (←) pointing to the left, toward the drive/directory in which you want your files to be located. To confirm, you can scroll through both windows to check if the file is located in both sides.

Quitting the program

To quit, click on the CLOSE button in the lower left corner to disconnect your account from the program. Then, click on the EXIT button in the lower right corner to quit the program.

File transferring on Unix

In Unix, file transferring is done between one Unix account and another Unix account. This is useful for sending an attachment through a different email address or simply for creating another backup of that file.

Opening the program

To open the program in Unix to transfer files, type in **ftp <domain name>** at your Unix prompt. The domain name would be the account in which you would like to connect for adding or retrieving a file. The domain name should be For example:

- > **ftp sftp.eden.rutgers.edu**
- > **ftp rci.rutgers.edu**
- > **ftp remus.rutgers.edu**

After typing in the command, press "return" on your keyboard.

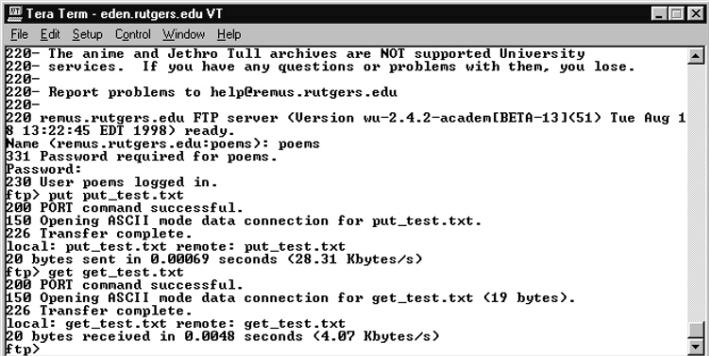
Making the connection

There will be a prompt for your NAME, enter your username and hit "return" when completed. Then a prompt for your PASSWORD will appear. Enter your password for your account and hit the "return" key when you are finished. In a successful situation, it will display user "logged in", however if the username and/or password are incorrect, it will display "login failed". If the connection was unsuccessful, type in **quit**, and restart the process by opening the program.

Moving files to another Unix account

Before you begin to transfer the file, note the type of file you are transferring. If you are transferring a text file, type **ascii** at the prompt and then press "enter". For other types of files, type **binary** at the prompt.

This will set the mode in which the file will be transferred. If you are unaware of the file type, it is suggested that you set the mode as **binary**. To transfer a file to another Unix account, you must type **put <filename>**. The **filename** is the name of the file you want to transfer to the other Unix account (without "<...>"). Press "enter" after you have

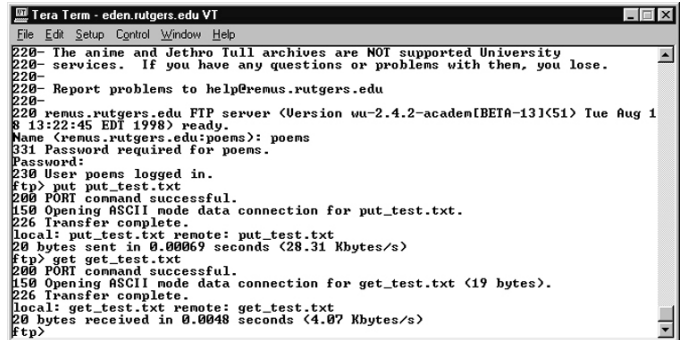


```
Tera Term - eden.rutgers.edu VT
File Edit Setup Control Window Help
220- The anime and Jethro Tull archives are NOT supported University
220- services. If you have any questions or problems with them, you lose.
220-
220- Report problems to help@remus.rutgers.edu
220-
220 remus.rutgers.edu FTP server (Version wu-2.4.2-acaden[BETA-13](51) Tue Aug 1
$ 13:22:45 EDT 1998) ready.
Name (remus.rutgers.edu:poems): poems
331 Password required for poems.
Password:
230 User poems logged in.
ftp> put put_test.txt
200 PORT command successful.
150 Opening ASCII mode data connection for put_test.txt.
226 Transfer complete.
local: put_test.txt remote: put_test.txt
20 bytes sent in 0.00069 seconds (28.31 Kbytes/s)
ftp> get get_test.txt
200 PORT command successful.
150 Opening ASCII mode data connection for get_test.txt (19 bytes).
226 Transfer complete.
local: get_test.txt remote: get_test.txt
20 bytes received in 0.0048 seconds (4.07 Kbytes/s)
ftp>
```

typed in the command and the file that you want to transfer. The screen will display updates on the transaction, you should be concerned about is the "Transfer complete" and the number of bytes sent on the last line. If those are not displayed, your transfer was not completed. If it was unsuccessful, check the spelling of the file, and try again. In addition, after you quit the program, you can confirm the presents of the file(s) by typing in **ls** at the prompt. This will list all the files in your current account.

Moving files from another Unix account

Before you begin to transfer the file, note the type of file you are transferring. If you are transferring a text file, type **ascii** at the prompt and then press "enter". For other types of files, type **binary** at the prompt. This will set the mode in which the file will be transferred. If you are unaware of the file type, it is suggested that you set the mode as **binary**. To transfer a file from another Unix account, you must type **get <filename>**.

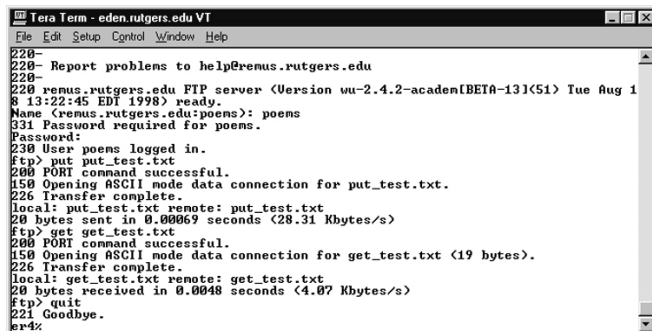


```
Tera Term - eden.rutgers.edu VT
File Edit Setup Control Window Help
220- The anime and Jethro Tull archives are NOT supported University
220- services. If you have any questions or problems with them, you lose.
220-
220- Report problems to help@remus.rutgers.edu
220-
220- remus.rutgers.edu FTP server (Version wu-2.4.2-academ(BETA-13)(51) Tue Aug 1
8 13:22:45 EDT 1998) ready.
Name (remus.rutgers.edu:poems): poems
331 Password required for poems.
Password:
230 User poems logged in.
ftp> put put_test.txt
200 PORT command successful.
150 Opening ASCII mode data connection for put_test.txt.
226 Transfer complete.
local: put_test.txt remote: put_test.txt
20 bytes sent in 0.00069 seconds (28.31 Kbytes/s)
ftp> get get_test.txt
200 PORT command successful.
150 Opening ASCII mode data connection for get_test.txt (19 bytes).
226 Transfer complete.
local: get_test.txt remote: get_test.txt
20 bytes received in 0.0048 seconds (4.07 Kbytes/s)
ftp>
```

The **filename** is the name of the file you want to receive from the other Unix account (without "<...>"). Press "enter" after you have typed in the command and the file that you want to transfer. The screen will display updates on the transaction, you should be concerned about is the "Transfer complete" and the number of bytes received on the last line. If those are not displayed, your transfer was not completed. If it was unsuccessful, check the spelling of the file, and try again. In addition, you can confirm the presents of the file(s) by typing **ls** at the prompt.

Quitting the program

To exist out of the program, simply type **quit** (ftp> **quit**) at the prompt.



```
Tera Term - eden.rutgers.edu VT
File Edit Setup Control Window Help
220-
220- Report problems to help@remus.rutgers.edu
220-
220- remus.rutgers.edu FTP server (Version wu-2.4.2-academ(BETA-13)(51) Tue Aug 1
8 13:22:45 EDT 1998) ready.
Name (remus.rutgers.edu:poems): poems
331 Passuord required for poems.
Password:
230 User poems logged in.
ftp> put put_test.txt
200 PORT command successful.
150 Opening ASCII mode data connection for put_test.txt.
226 Transfer complete.
local: put_test.txt remote: put_test.txt
20 bytes sent in 0.00069 seconds (28.31 Kbytes/s)
ftp> get get_test.txt
200 PORT command successful.
150 Opening ASCII mode data connection for get_test.txt (19 bytes).
226 Transfer complete.
local: get_test.txt remote: get_test.txt
20 bytes received in 0.0048 seconds (4.07 Kbytes/s)
ftp> quit
221 Goodbye.
er4x
```

Where to get more help

In each of the programs there is a help menu to assist you. In Unix, type **man ftp** at the prompt to get a description about using ftp. If you are in a Campus Computing Center, feel free to contact the consultant on duty for assistance.